

Series 20L ACMF

Linear Power Shaker



VGS Configuration Optional

High "G" force, high volume

With almost 17 square feet of screening area the 20LACMF high volume linear motion shaker can reach high "G" forces that will enable the user to achieve optimum performance. Even in the most challenging applications, the 20LACMF achieves consistently high throughput. Processing rates vary with slurry content, percent solids and viscosity.

Quick screen changes

Since our screen panels are factory pretensioned, replacement takes less than two minutes and requires only a light-to medium-weight hammer. Simplicity is the essence of every FSI design. Permanently sealed vibrators make lubrication systems totally unnecessary. Low 80-dB motor vibration eliminates the need for hearing protection. Each of the unit's two pretensioned screen panels can be installed or replaced independently of each other.

No lubrication

Simplicity pays off. FSI equipment has a B-10 bearing life requiring little or no maintenance. With permanently sealed bearings lubrication is eliminated. Simple visual checks of screen panels, deck rubbers, inflation of air spring assemblies, and quarterly torque checks of the vibrator motor bolts are all that is required. Fluid Systems, Inc. keeps you on-line for decades of troublefree performance. It's that simple!

The FSI Difference

- **High "G" Force**
- **16.9 ft² [1.57 m²] screening area**
- **Simple Design**
- **Rugged and Reliable**
- **High performance**
- **Low maintenance**
- **Quick screen panel changes**
- **Small footprint**
- **No lubrication**
- **Low noise**



www.FluidSystems.com

Houston Office

16619 Aldine Westfield Rd.
Houston, TX 77032
832-467-9898
FAX: 832-467-9897

New Orleans Office

2808 Engineers Road
Belle Chasse, LA 70037
504-393-1804
FAX: 504-393-5166

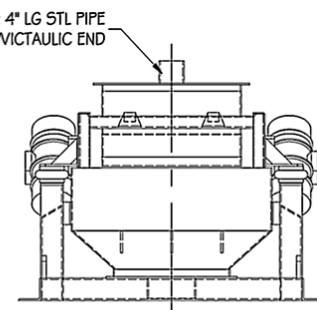
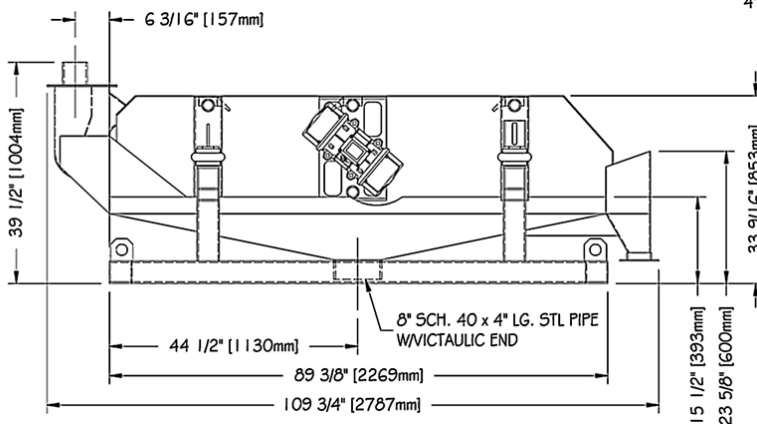
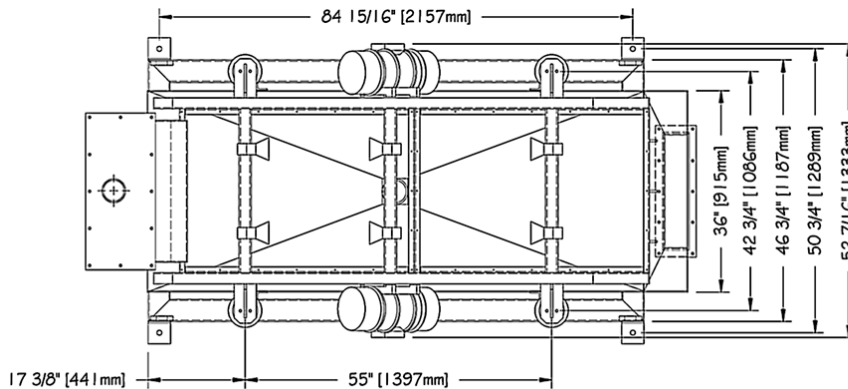
Series 20L ACMF

Linear Power Shaker



General Specifications

Series:	Series 20L
Model:	ACMF
Motors:	Two each 1800, 1500 or 1200 rpm exp. proof or non-exp. proof available
Bearings:	Permanently sealed and lubricated
Motion:	Linear, 0.13" A (1800), 0.156" A (1500), 0.23" A (1200), 5.0 "G"
VGS:	Force adjustable to 7.0 "G" maximum
Deck Adjustment:	Adjustable 0° to 5° uphill
Screens:	Two each 29" x 42" pretensioned panels with Wedgelok fasteners
Screening area:	16.87 ft ² [1.57 m ²]
Overall dimensions:	109" L x 54 3/4" W x 39 1/2" H 2787 mm x 1333 mm x 1004 mm



Fluid Systems, Inc.

Screen Sales, Manufacturing & Engineering

16619 Aldine Westfield Rd • Houston, TX 77032 • TEL 832-467-9898 • FAX 832-467-9897

Sales & Service

2808 Engineers Road • Belle Chasse, LA 70037 • TEL 504-393-1804 • FAX 504-393-5166

Sales@FluidSystems.com • Engineering@FluidSystems.com • Screens@FluidSystems.com • Service@FluidSystems.com